


DENTAL CARIES PREVENTION AND MANAGEMENT

**Dr Shahnaz Sultana Beauty
Associate Professor
Department of Dentistry
Green Life Medical College**

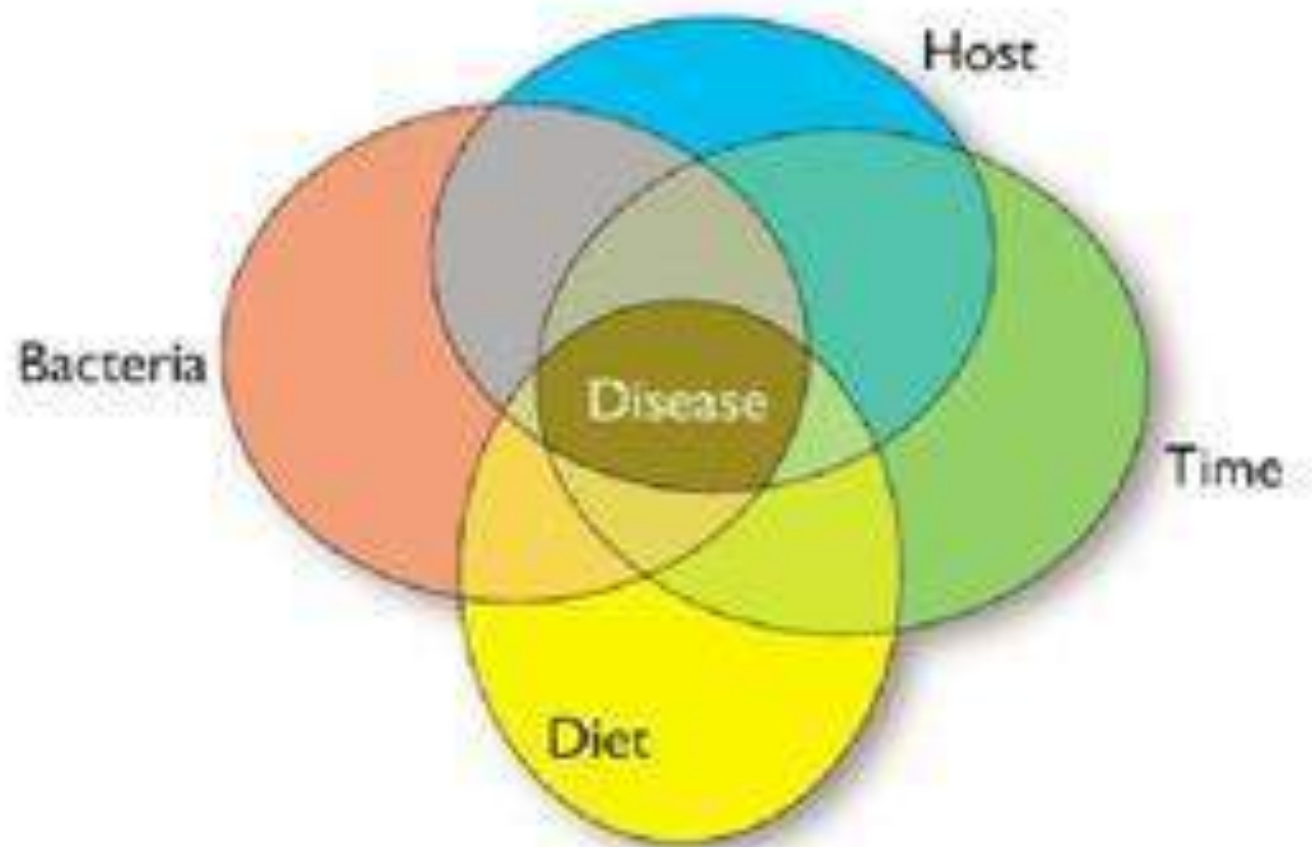


According to the world health organization dental caries is a local pathological process of the extra somatic background, leading to enamel decalcification, decomposition of dental hard tissue, and in consequence to formation of a dental cavity.

Streptococcus mutans is the main cause of dental decay. Various lactobacilli are associated with progression of the lesion.

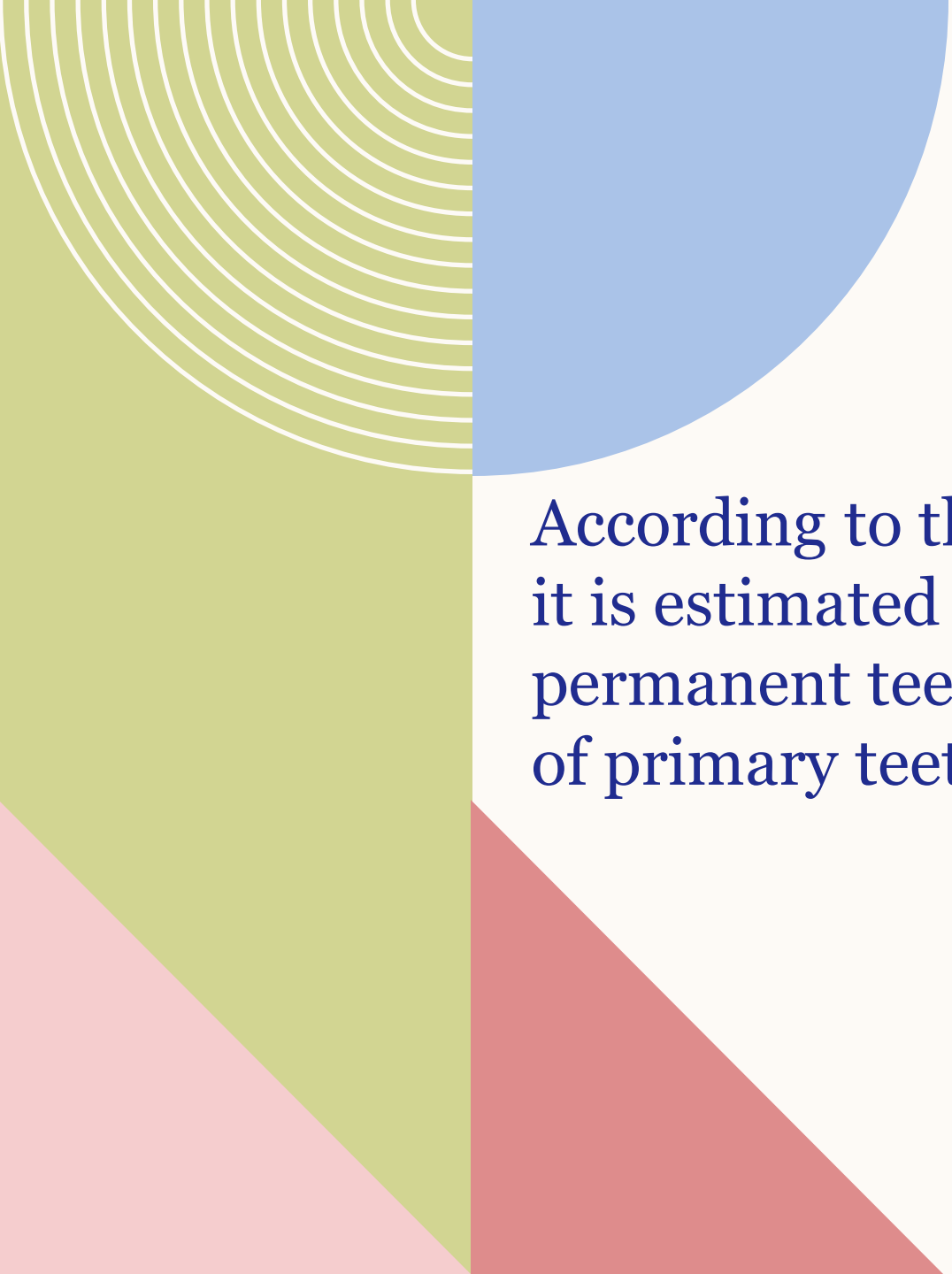
Dental caries

- a multi-factorial disease






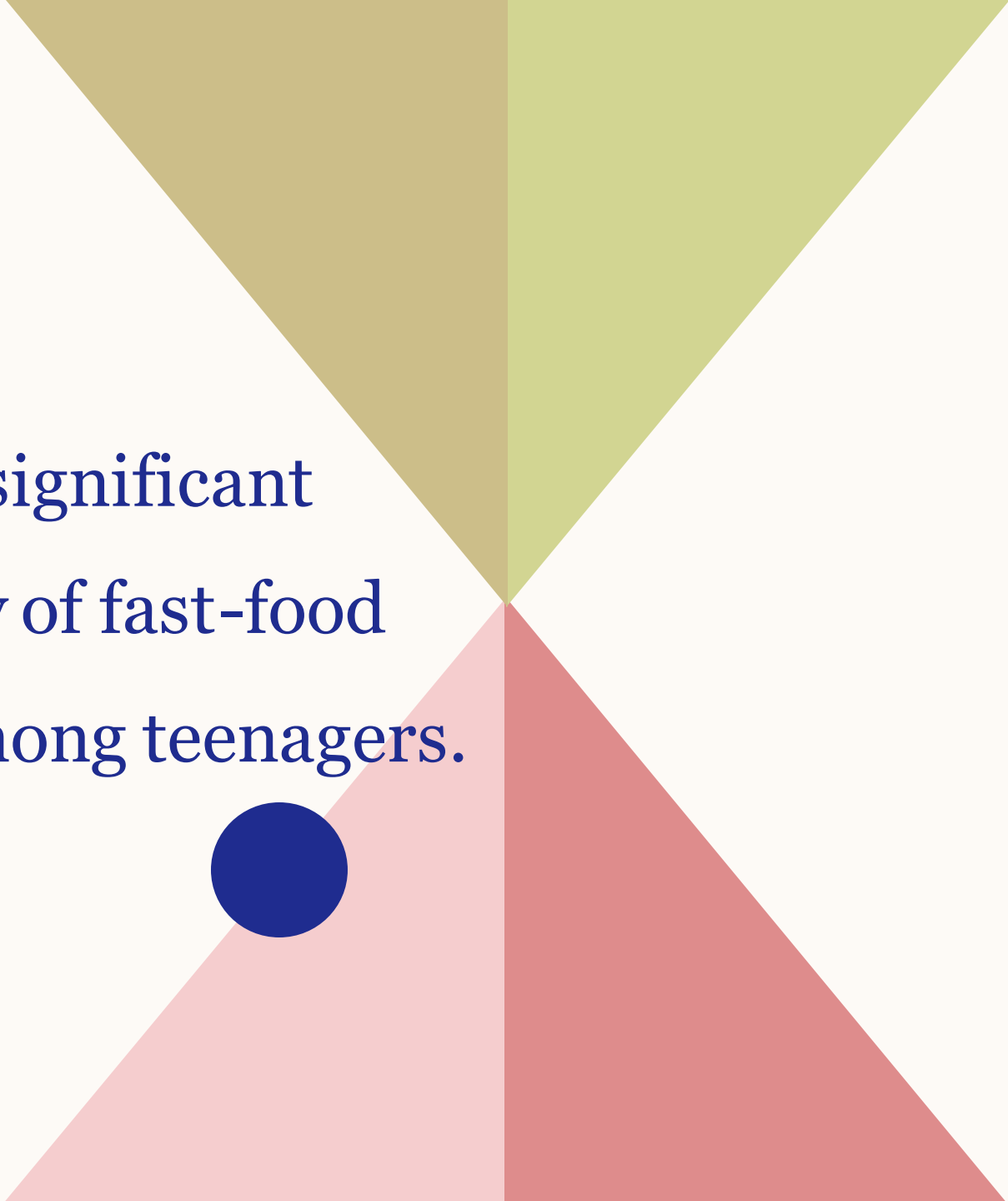
Dental caries has a genetic component that influences susceptibility through factors like enamel strength, saliva and immune response.



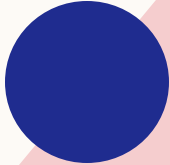
According to the global burden of disease study 2019 it is estimated that 2 billion people suffer from caries of permanent teeth and 520 million children suffer from caries of primary teeth.

The background features a vertical line on the left side. To the left of this line, there are concentric white circles on a light green background. To the right of the line, there are four colored regions: a blue semi-circle at the top, a light green rectangle in the middle, a light pink triangle at the bottom left, and a red triangle at the bottom right.

Numerous studies and global health, organizations confirm a strong link between junk food consumption and dental caries worldwide.



A study in Bangladesh found in a significant association between the frequency of fast-food consumption and dental caries among teenagers.



Sequelae of Dental Caries



Enamel Caries

Dentine Caries

Pulpitis

Acute

Chronic

Acute

Apical Peridontitis

Chronic

Periapical Abscess

Acute

Chronic

Acute

Osteomyelitis

Chronic

Periapical Granuloma

Periapical cyst

Periosteitis

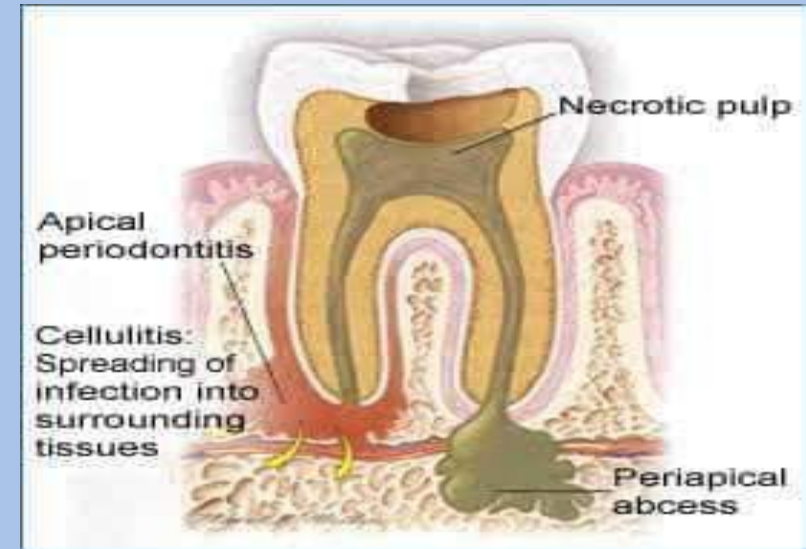
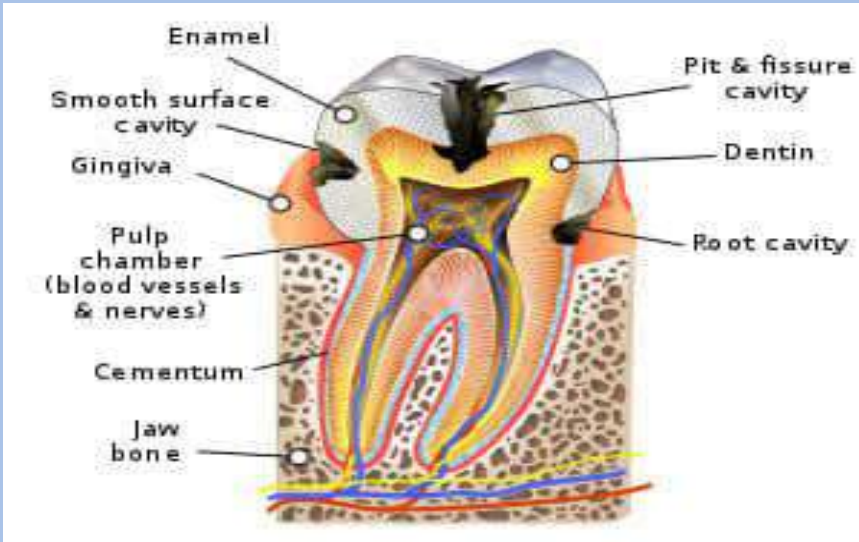
Cellulitis

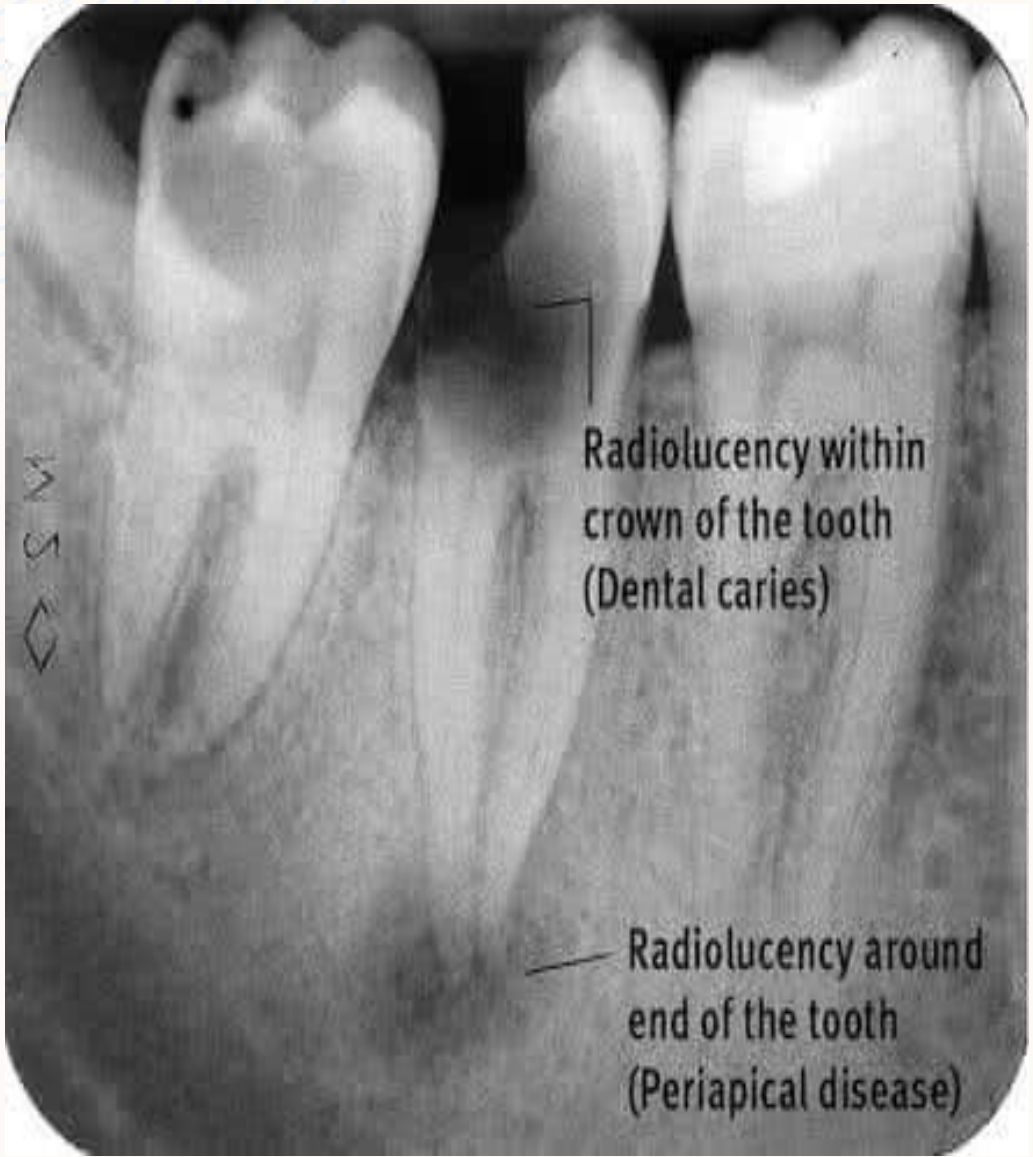
Abscess

THE STAGES OF CARIES DEVELOPMENT



shutterstock.com • 401758114





CLASS 1

Pits and fissures



CLASS 2

Proximal surfaces of posteriors



CLASS 3

Proximal surfaces of anteriors



CLASS 4

Proximal surfaces of anteriors also involving incisal edges



CLASS 5

Gingival third

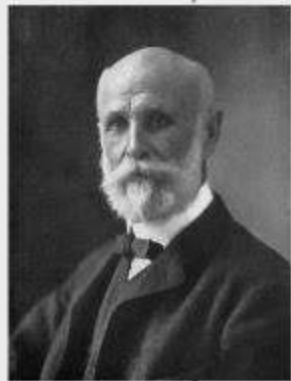


CLASS 6

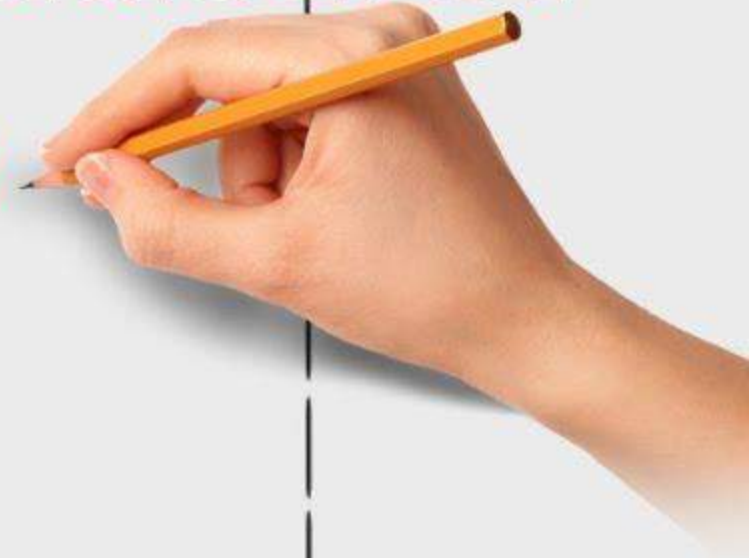
Cusps or Incisal Surfaces

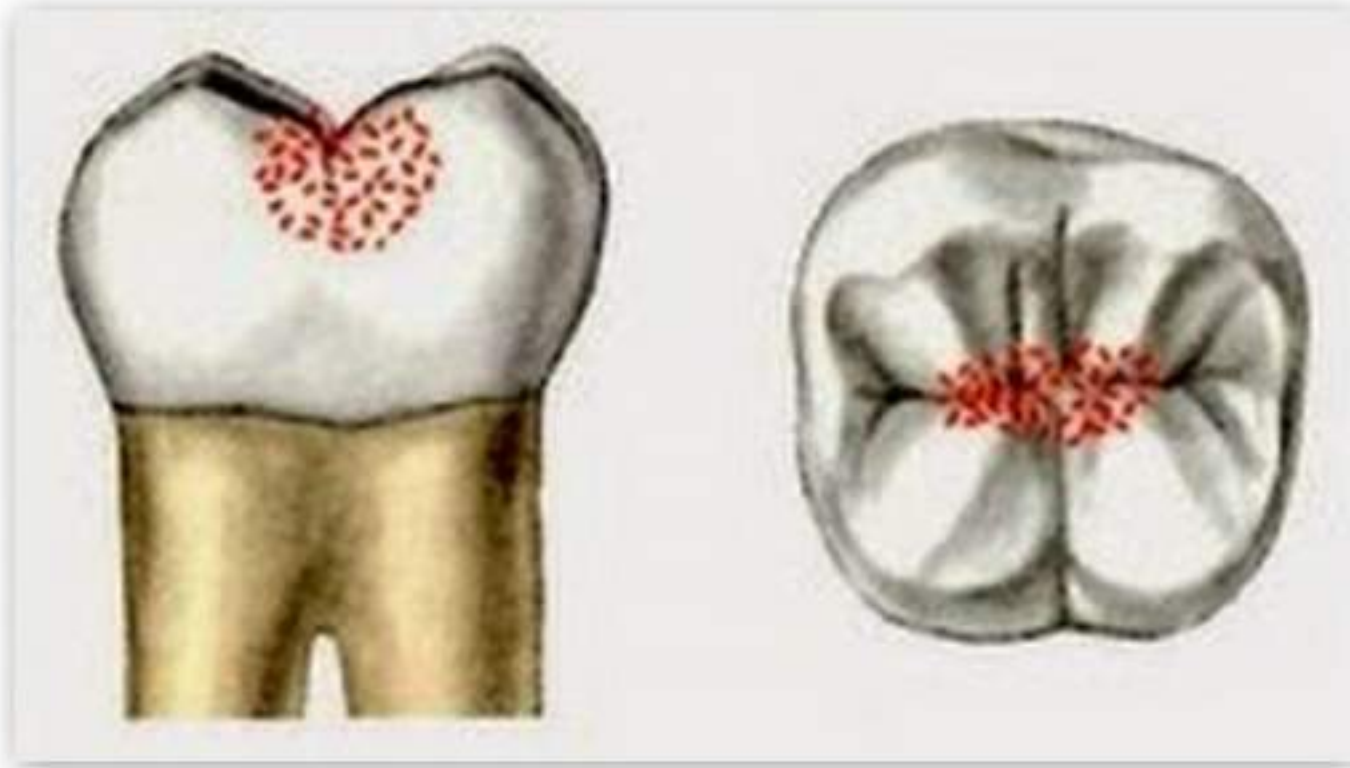


G.V. Black's Classification of Dental Caries

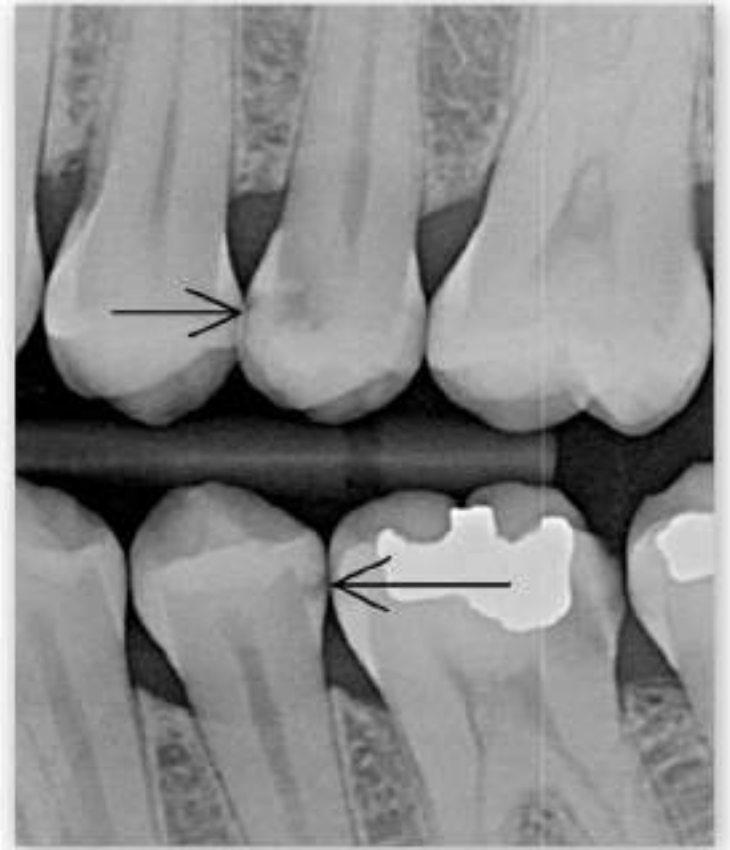
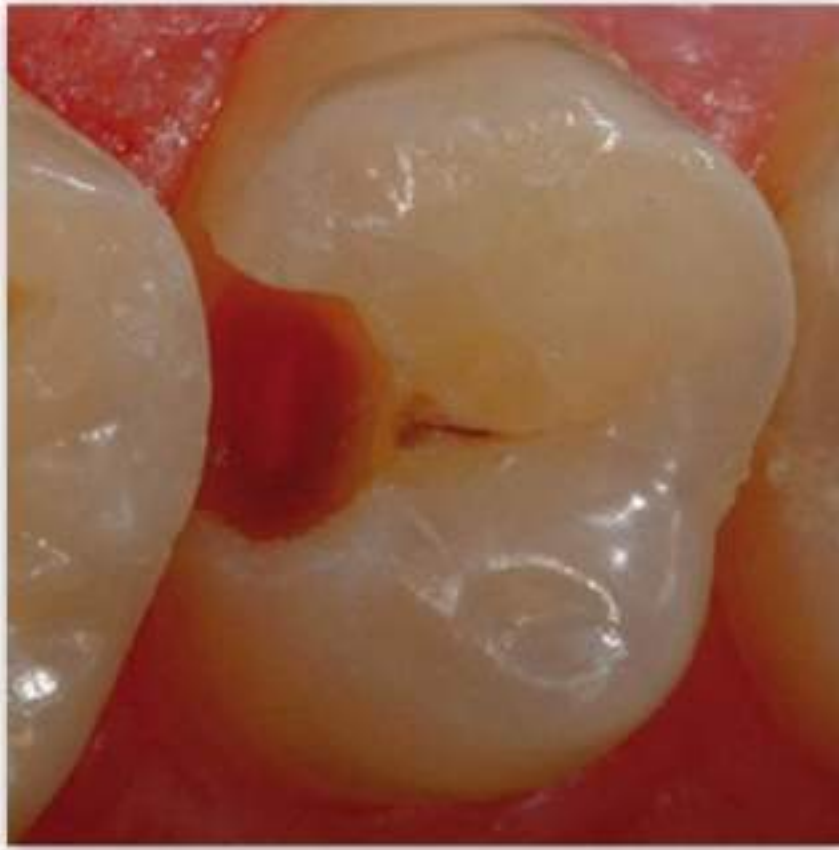
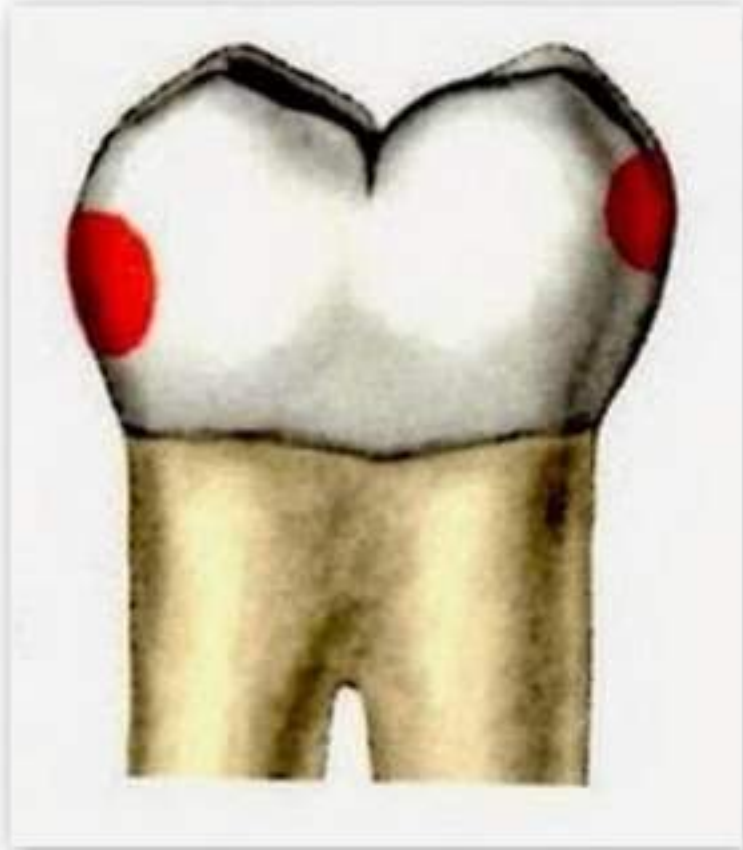


MADE EASY!





Class I Lesions



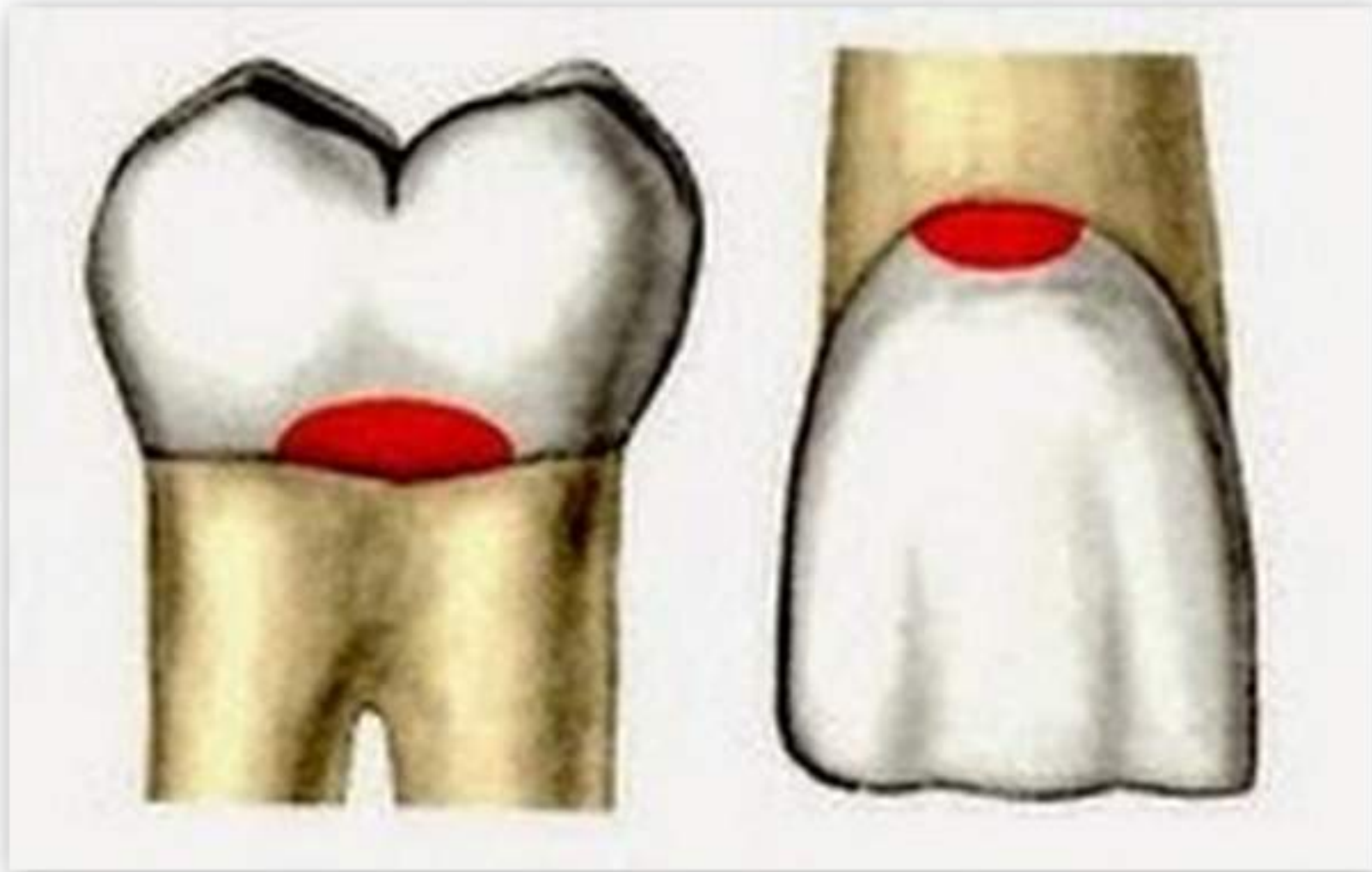
Class II Lesions



Class III Lesions



Class IV Lesions

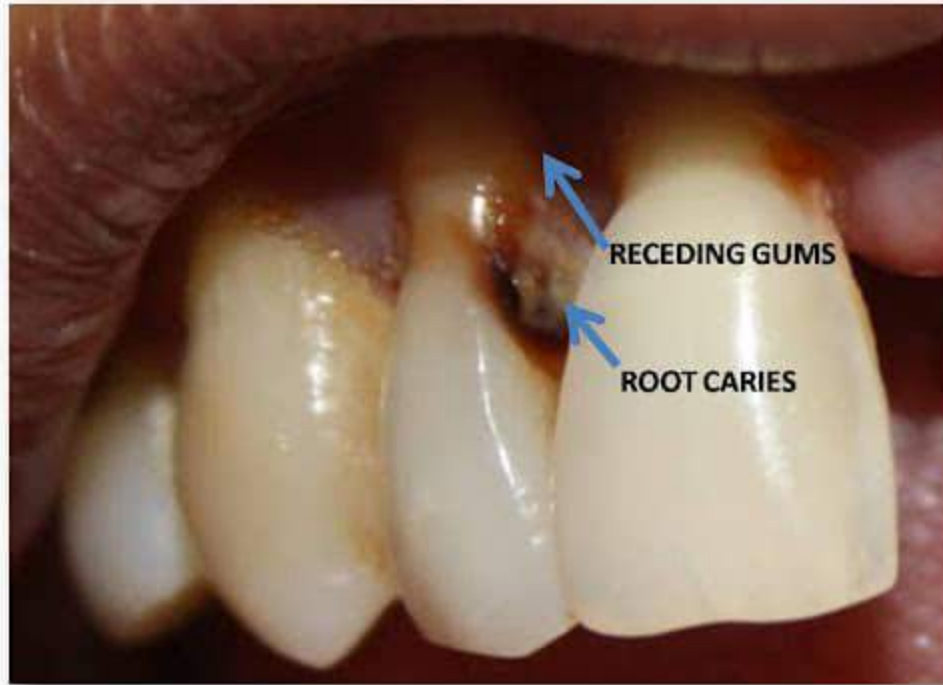


Class V Lesions

Early childhood caries



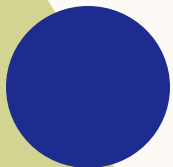
ROOT CARIES



Reversible pulpitis



Irreversible pulpitis





SYMPTOMS

If left untreated the infection may progress to chronic apical abscess wherein the contain pus may break through to form a sinus tract usually opening in the labial or buccal mucosa.





SYMPTOMS

- It may further progress onto osteomyelitis or cellulitis.
- General systemic manifestation maybe seen
 1. patient appear pale, weakened from pain and loss of sleep.
 2. Pyrexia and patient may complain of headache



SYMPTOMS

There are local reactions like:

- Tenderness of tooth.
- Severe throbbing pain.
- Swelling.
- Sinus tract.



Extraoral Sinus







Management of Dental Caries









Immediate after Obturation







BEST FOODS FOR HEALTHY TEETH



1. NUTRIENT-DENSE ANIMAL FOODS



2. MINERAL-RICH PLANTS & GREENS



3. HEALTHY FATS



4. COLLAGEN & GELATIN SOURCES



5. CRUNCHY, UNPROCESSED FOODS





TOP TIPS TO PREVENT TOOTH DECAY



Brushing your
teeth at least
twice a day

Flossing your
teeth every day



Cutting back on
the consumption
of sugar

Dental sealants
or **fluoride**
treatments




Dental checkups
at least **twice**
a year



The image features a bar chart on a dark blue background. The x-axis represents the stages of dental decay, and the y-axis represents the cost of treatment. There are four bars, each consisting of a stack of gold coins and a tooth. From left to right: 1) A healthy tooth on a stack of 3 coins. 2) A tooth with a small cavity on a stack of 5 coins. 3) A tooth with a large cavity on a stack of 10 coins. 4) A broken tooth on a stack of 15 coins. The text 'DENTAL CARE ISN'T COSTLY, DELAY IS.' is written in bold, yellow and white letters at the bottom of the chart. Below the text, 'FB: DENTAL STUDENT' is written in small white letters.

***DENTAL CARE ISN'T
COSTLY, DELAY IS.***

FB: DENTAL STUDENT



**Even a small
cavity can
lead to big
damage!**

STOP TOOTH DECAY WHILE IT'S SMALL

A small cavity could later require a root canal or tooth extraction.

THANK YOU ALL!